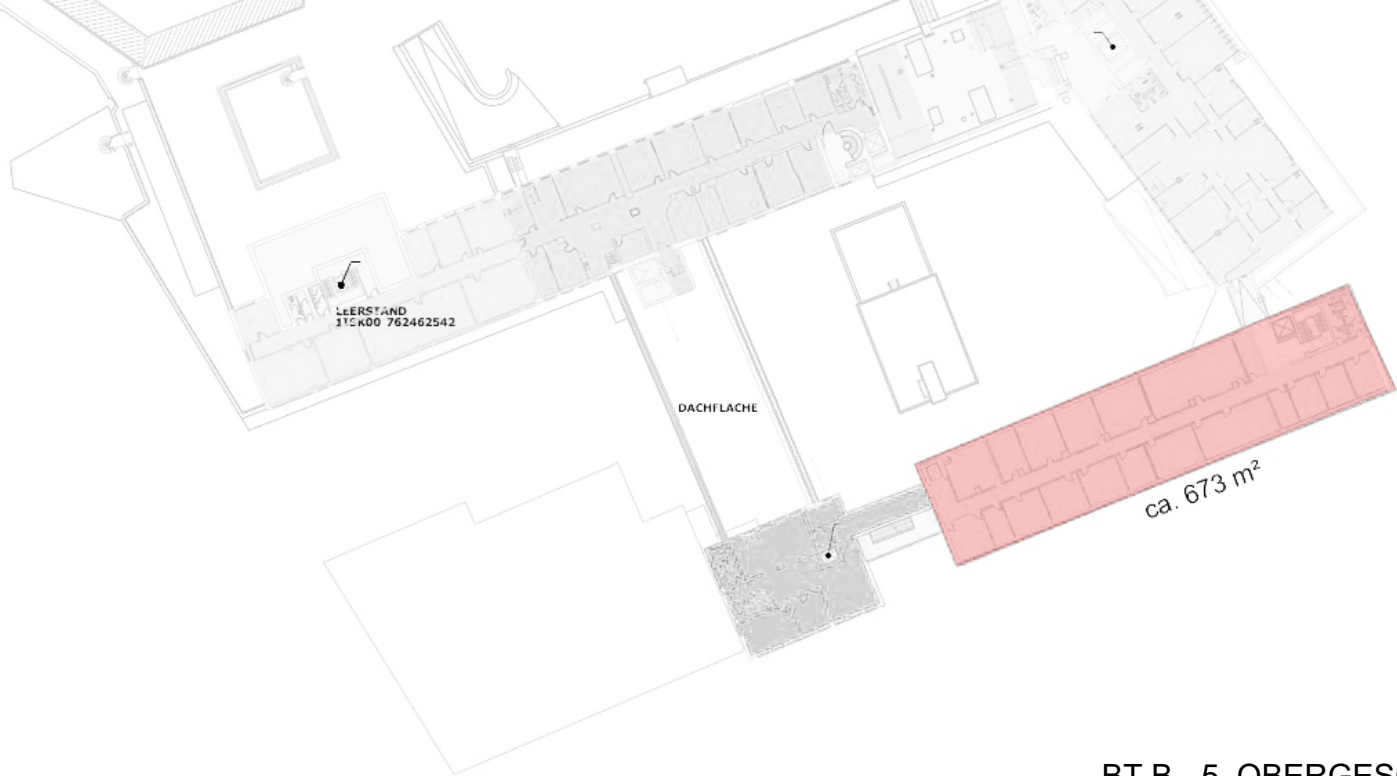


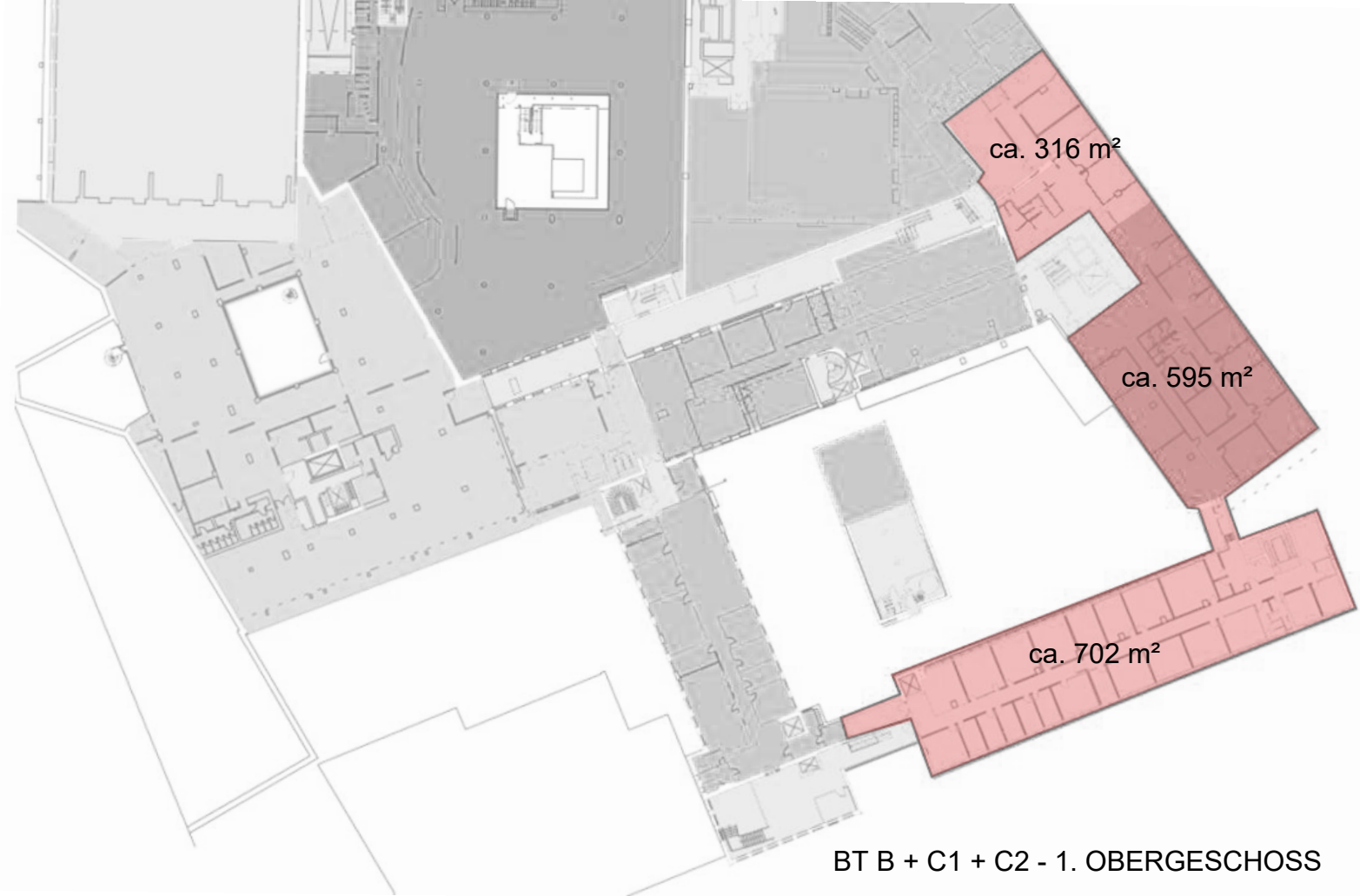


ca. 290 m<sup>2</sup>

ca. 89 m<sup>2</sup>



BT B - 5. OBERGESCHOSS



BT B + C1 + C2 - 1. OBERGESCHOSS

r2 = 7,0 m  
SU = 88cm, 80cm,  
80cm, 90cm

Feuerwehrrufahrt

Schäufelstg.  
(9,91 m<sup>2</sup>)

Schacht  
5,71 m<sup>2</sup>

73,60 m<sup>2</sup>

ERHEIT 0 / 00  
LADEN  
Erheit 0/05  
in Verbindung

AB  
SIS

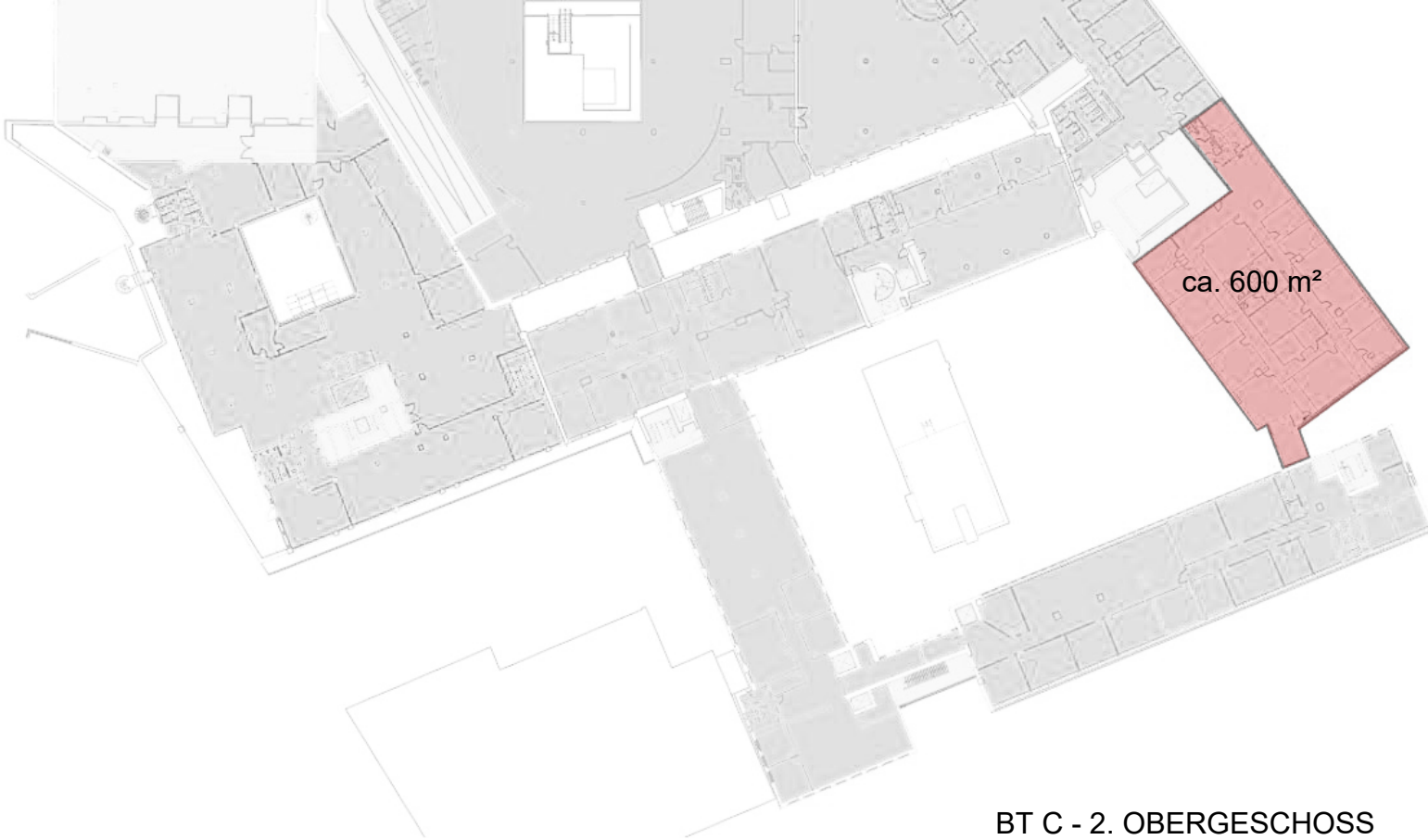
Schäufelstg.  
5,84 m<sup>2</sup>

ERHEIT 0 / 04  
LADEN

ca. 290 m<sup>2</sup>

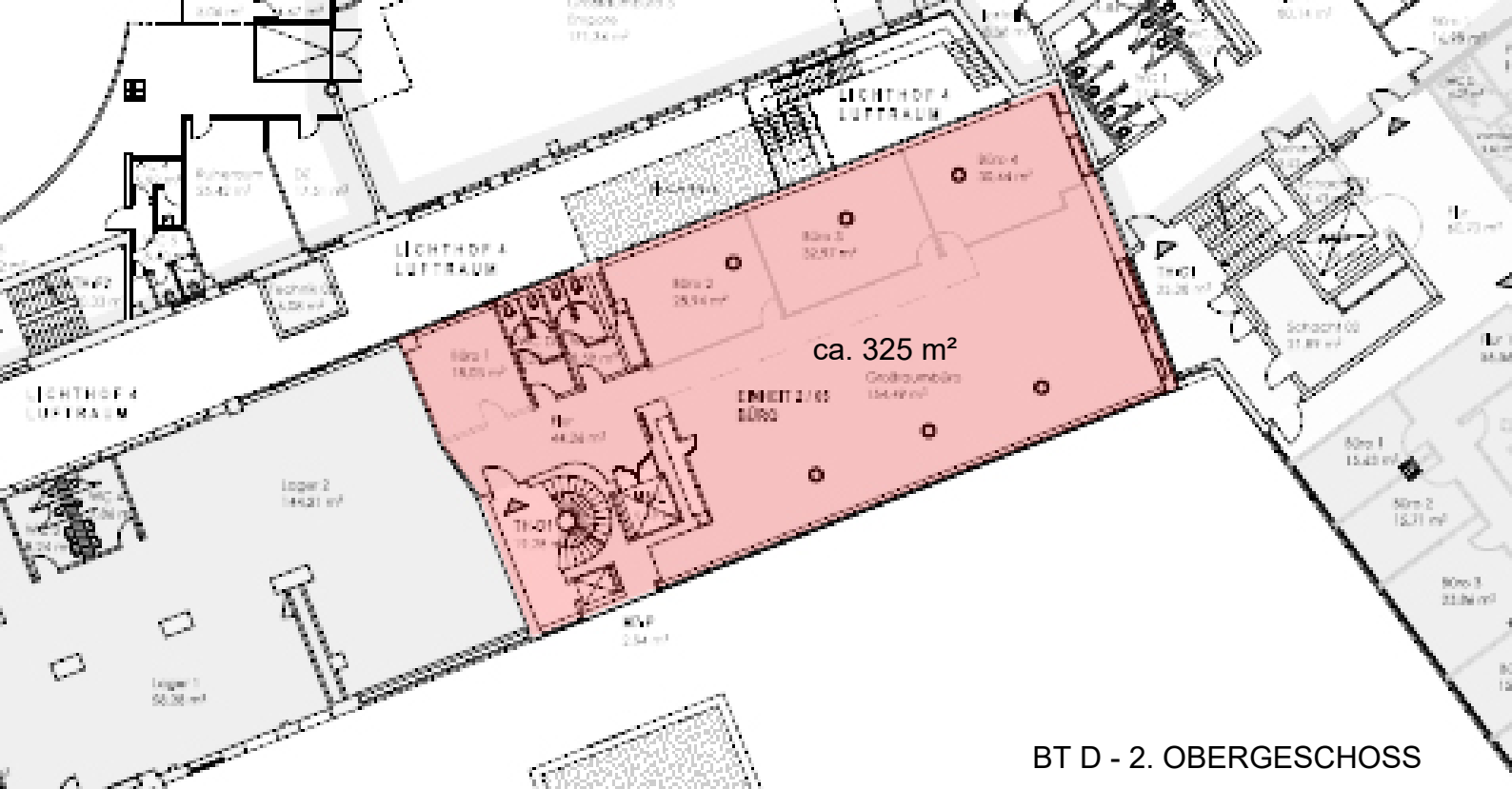
STRASSE

BT B - ERDGESCHOSS



ca. 600 m<sup>2</sup>

BT C - 2. OBERGESCHOSS



BT D - 2. OBERGESCHOSS

